



Instructions

JK - OVERHEAD MOLLE SHELF

Thank you for purchasing your JK Overhead MOLLE Shelf from AAL! We greatly appreciate your trust in our company. We take that purchase and your commitment to us very seriously. If you have any questions along the way, please don't hesitate to give us a call at 385.202.4188.

****Please read these instructions thoroughly before starting this project.****

Tools/Components Required:

There is more than one tool for every job, but below is the list of tools we use for this installation.

Tools listed are for assembly only, as disassembly tools will vary.

- 4mm Hex Key Allen Wrench
(for M6 hex key bolts)

What's Included

Overhead MOLLE Parts

Main Panel	2	Brace Support	2
Driver Mount	1	Plate Logo	1
Passenger Mount	1		

Overhead MOLLE Hardware:

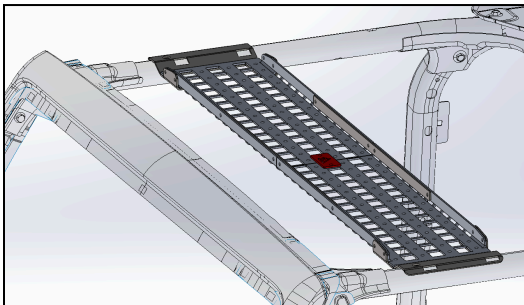
M6x14mm Button Head Bolts	30
M6 Nylon Insert Nuts	30

Part Overview and Prep

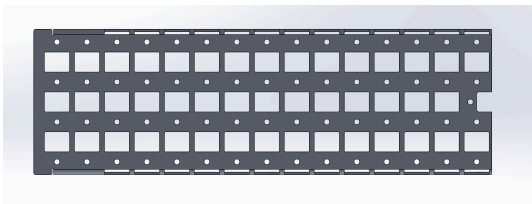
First lets review images of all the necessary parts and hardware to ensure we have everything we need for the installation process



Overhead MOLLE Panel Parts:



Main Panel (2):



Brace Support (2):



Driver Mount (1):



Passenger Mount (1):

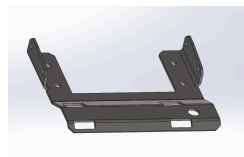


Plate Logo (1):



Overhead MOLLE Panel Hardware:

M6x14mm Button Head Bolts 30

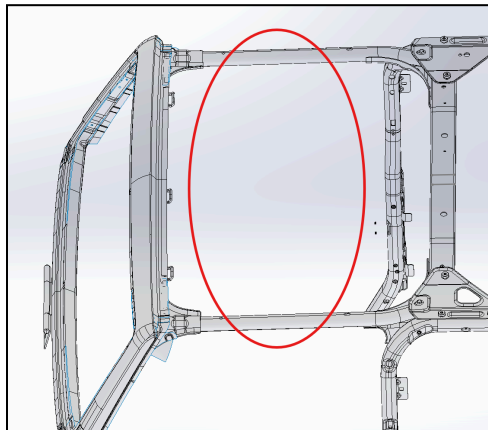


M6 Nylon Insert Nuts 30



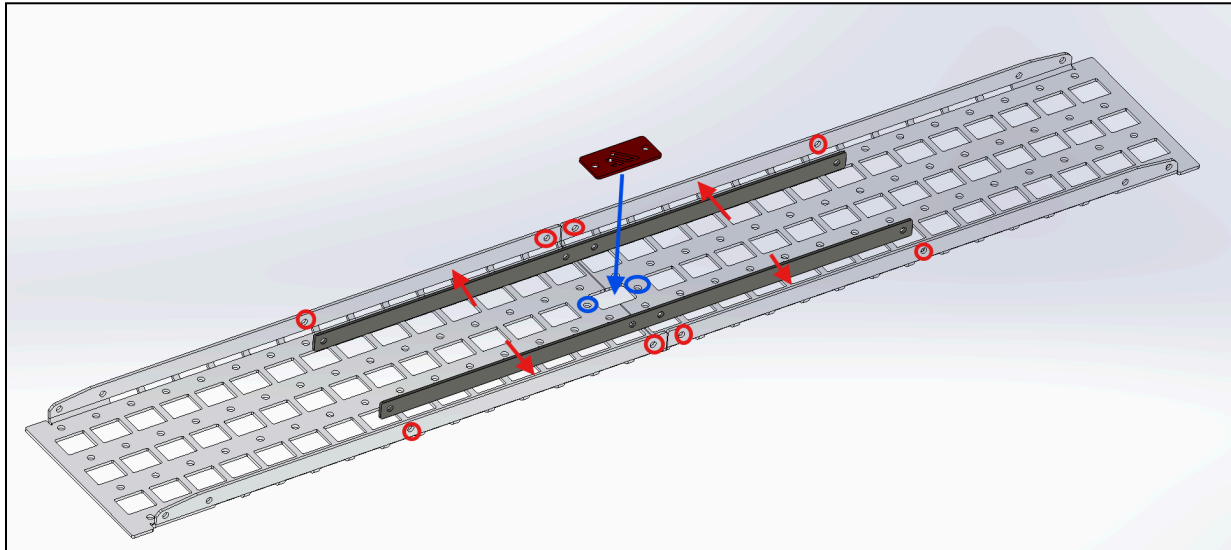
Prep

To prepare for installation, remove the front two roof panels such that the roll cage of the car is exposed in the two front seats.

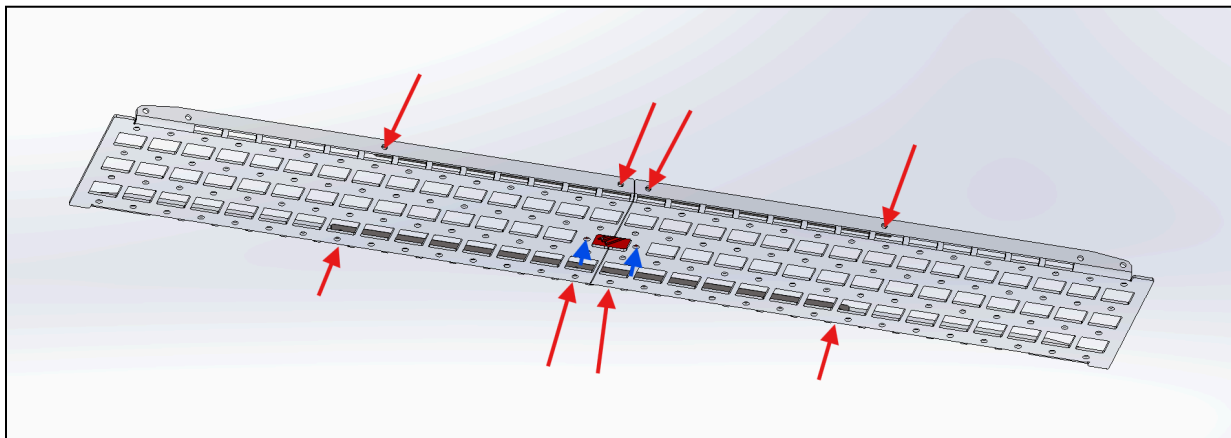


Step 1 - Connect the MOLLE Panels

Align the the **(2) main panels** adjacent to one another and place the **Plate Logo** and **Brace Connectors** in the positions shown below and bolt each

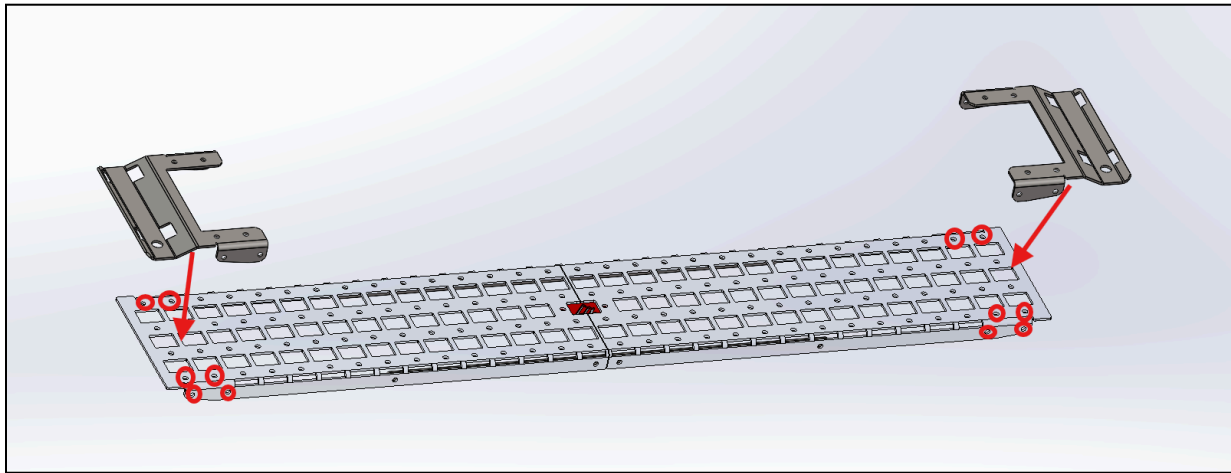


Then using **(10) M6x14mm Button Head Bolts** and **(10) M6 Nuts**, fasten the brackets through the underside of the fixture.

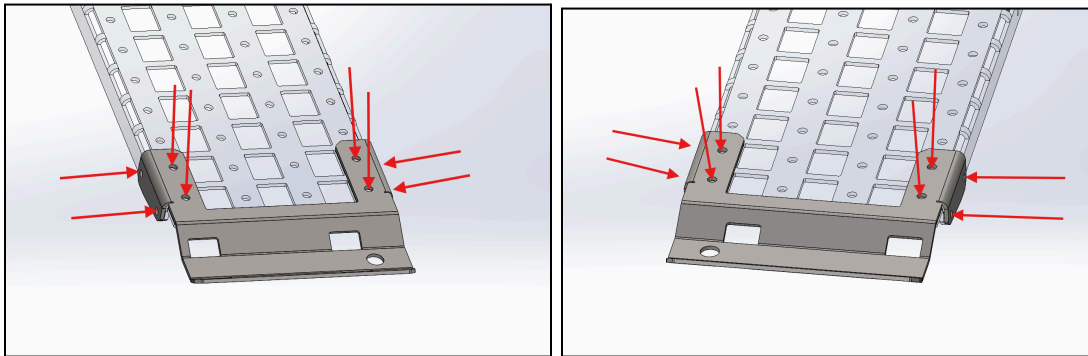


Step 2 - Attach the Mounting Brackets

Align the **Driver Side** and **Passenger Side** Mounts with the panel fixture as shown below.

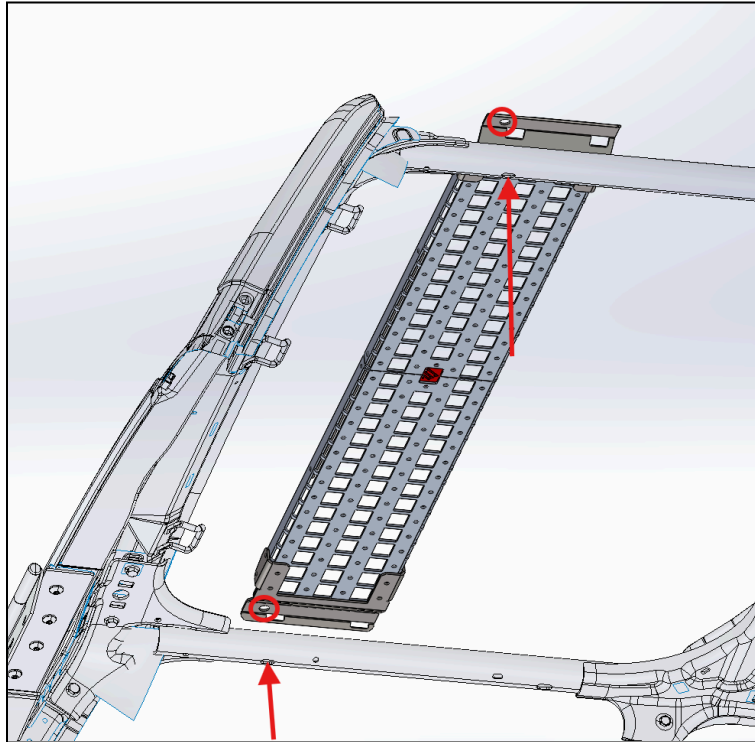


Once aligned, bolt through the underside using **(16) M6x14mm Button Head Bolts** and **(16) M6 Nuts**.



Step 3 - Mount the Panels to the Vehicle

The third and final step is to fasten the overhead fixture to the frame of the vehicle using two of the Jeep JK factory bolts and nuts. Install through the underside of the roll cage as shown below.



Once Installed, you can put your front roof pieces back on. After it should look like this:



Share Your Photos!

We take great pride in building our products and we hope that pride extends to you after installing your JK Overhead MOLLE Shelf. If you are able to share your photos online (Facebook and Instagram), please tag **@AmericanAdventureLab**. We would love to see how it turned out and give you some reciprocal attention in return!

Congrats! You're all done!

Thank you!

At American Adventure Lab, we strive to improve anywhere we can. If you experience any issues with this product or have any suggestions, please let us know.

If you have any questions or concerns, please don't hesitate to reach out to us at 385.202.4188 or via email at Support@erp.adventurelab.com.

